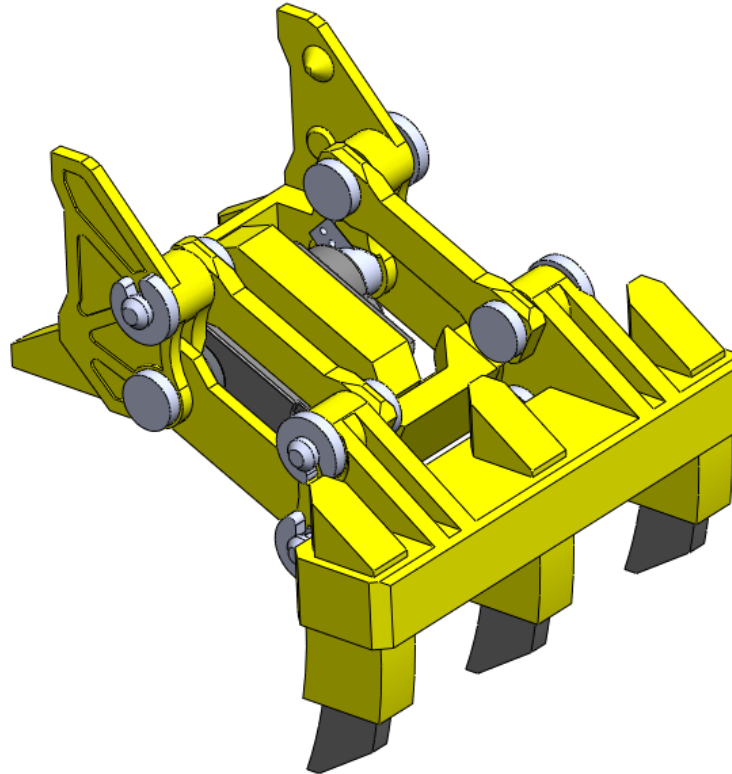


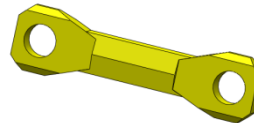
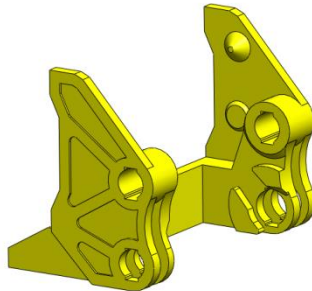
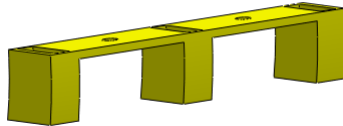
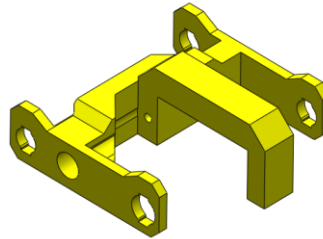
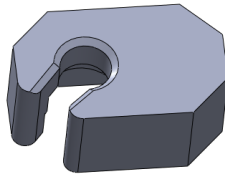
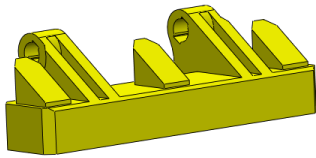
# Cyber Brick RC Bulldozer – Ripper Attachment

R0 - 2025|09|24 - MottN

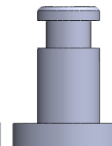


# Ripper Assembly

## Parts:

 $2x$  $3x$ 

7x

 $4x$  $2x$ 

1x

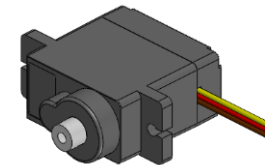
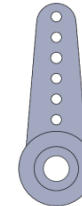
## Hardware:



2x M2.5x6



## 2x Servo Screws

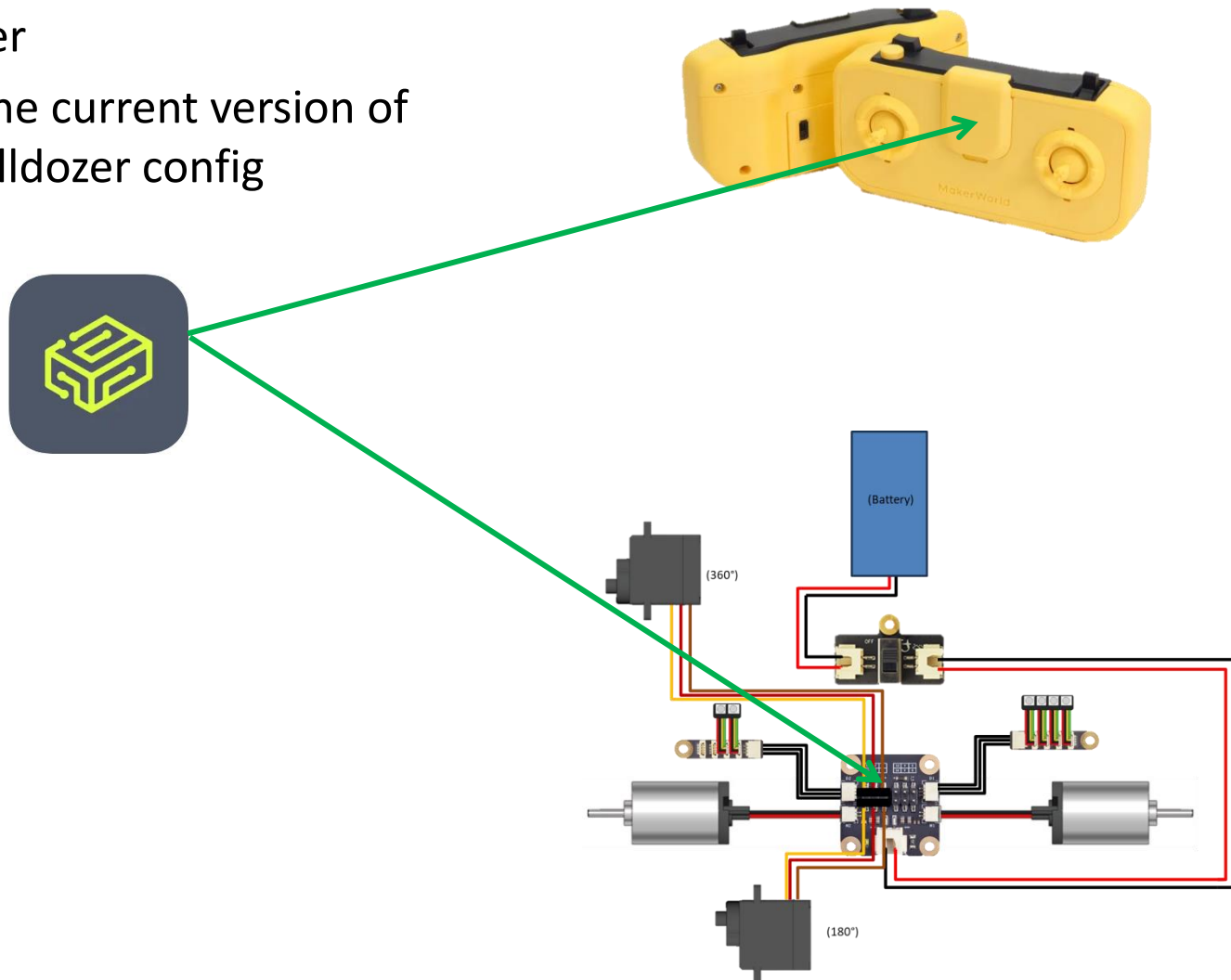


### 180° Servo (PG001)

**(!!) Check label to verify**

Use the app to:

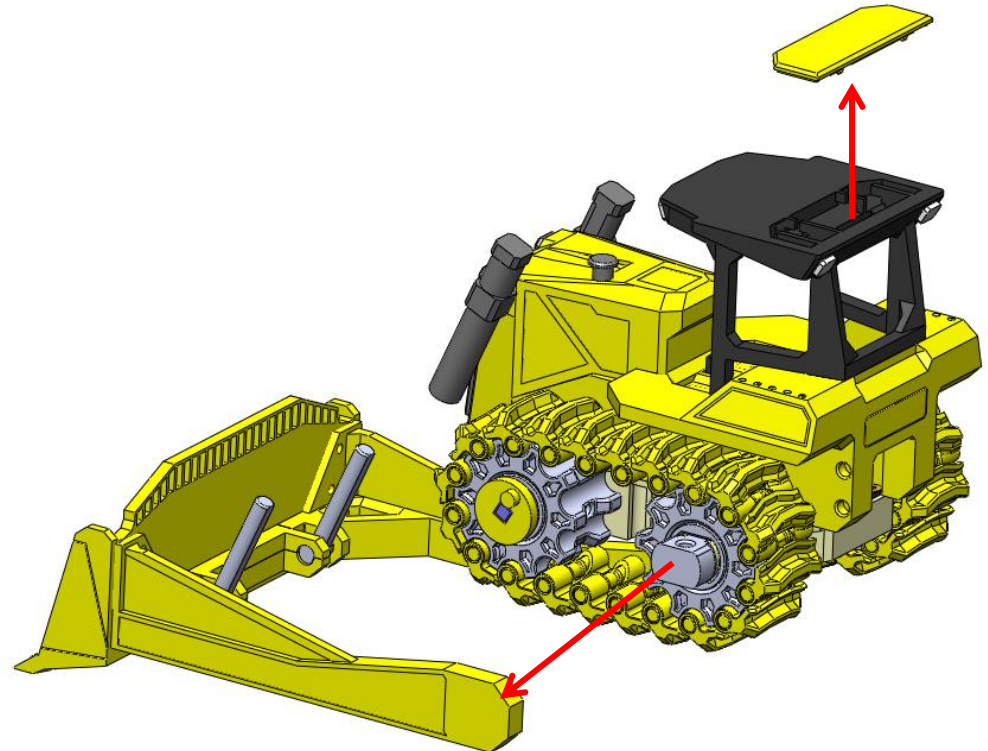
1. Pair the controller with the receiver
2. Load the current version of the Bulldozer config



1

Disassemble bulldozer to access control board

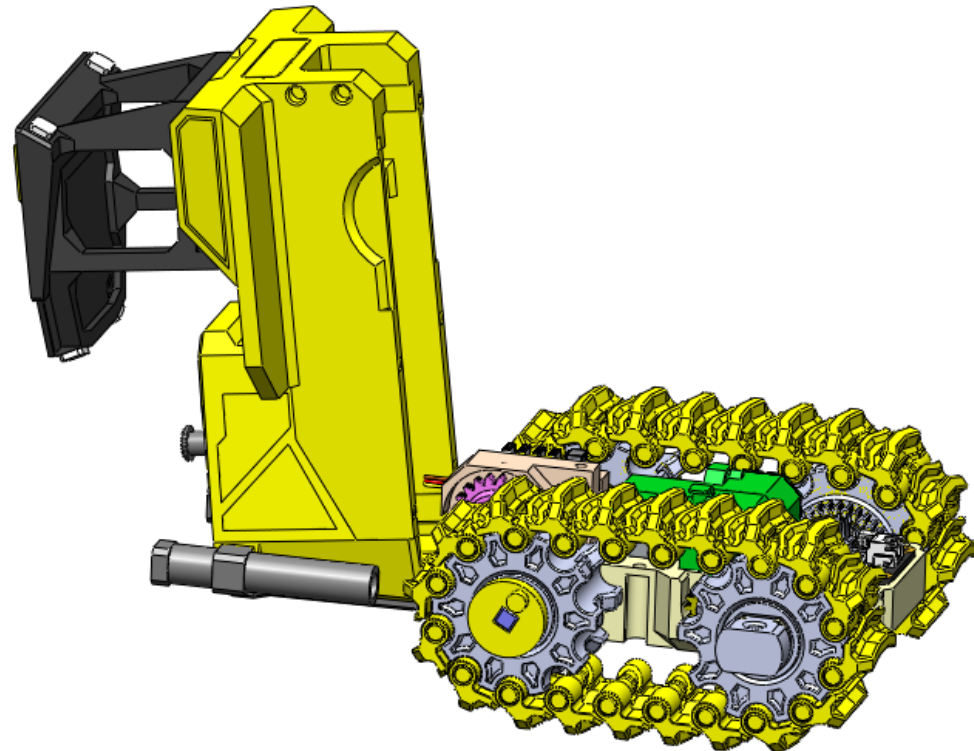
- Disconnect the power cable at the rear of control board
- Remove Blade by spreading and lifting off its pegs
- Remove the cab cover to access the LED hub wire.



## 2

Disassemble bulldozer to access control board

- A. Disconnect the LED hub wire in the top cab (if present)
- B. Carefully lift the body off of the chassis and set vertically, being careful with the front LEDs if present.

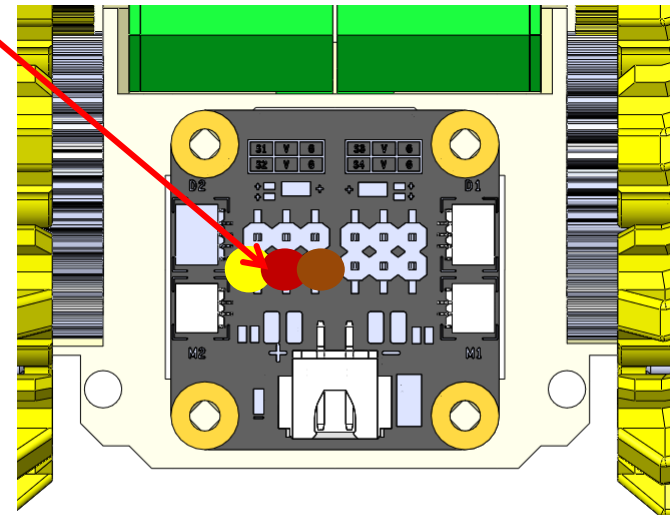
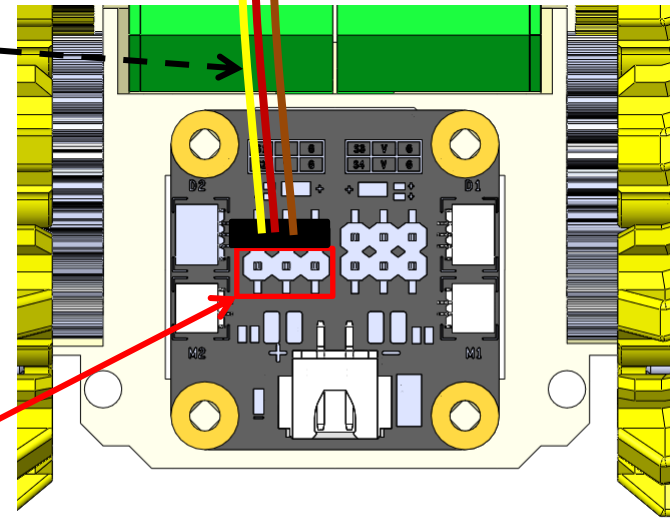
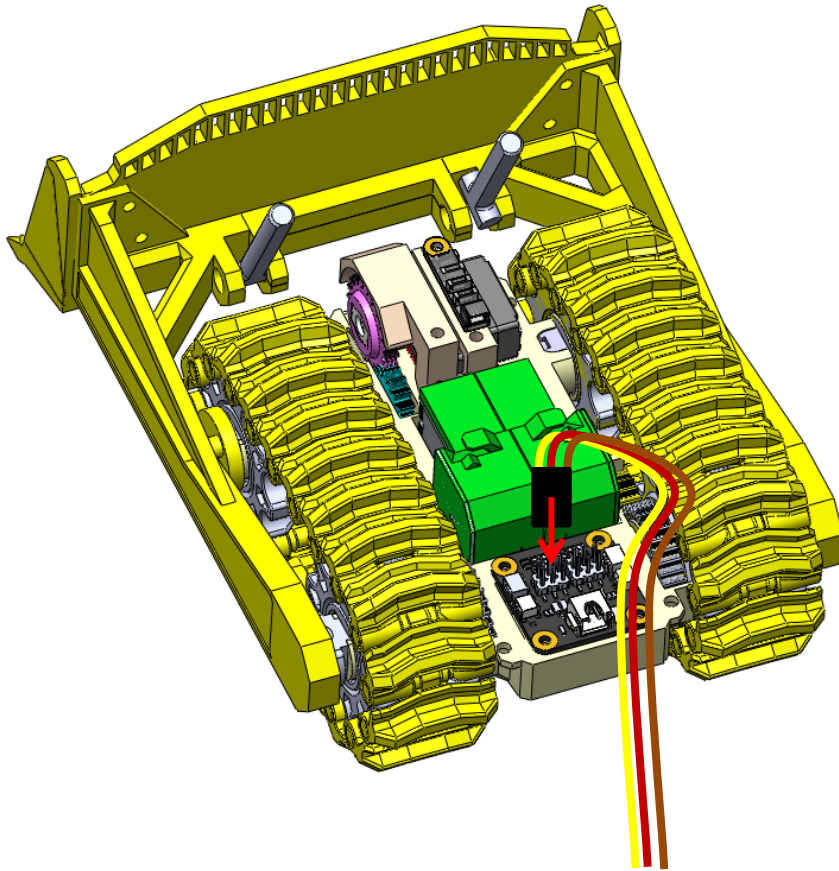


3

Connect the 180° servo to port 2

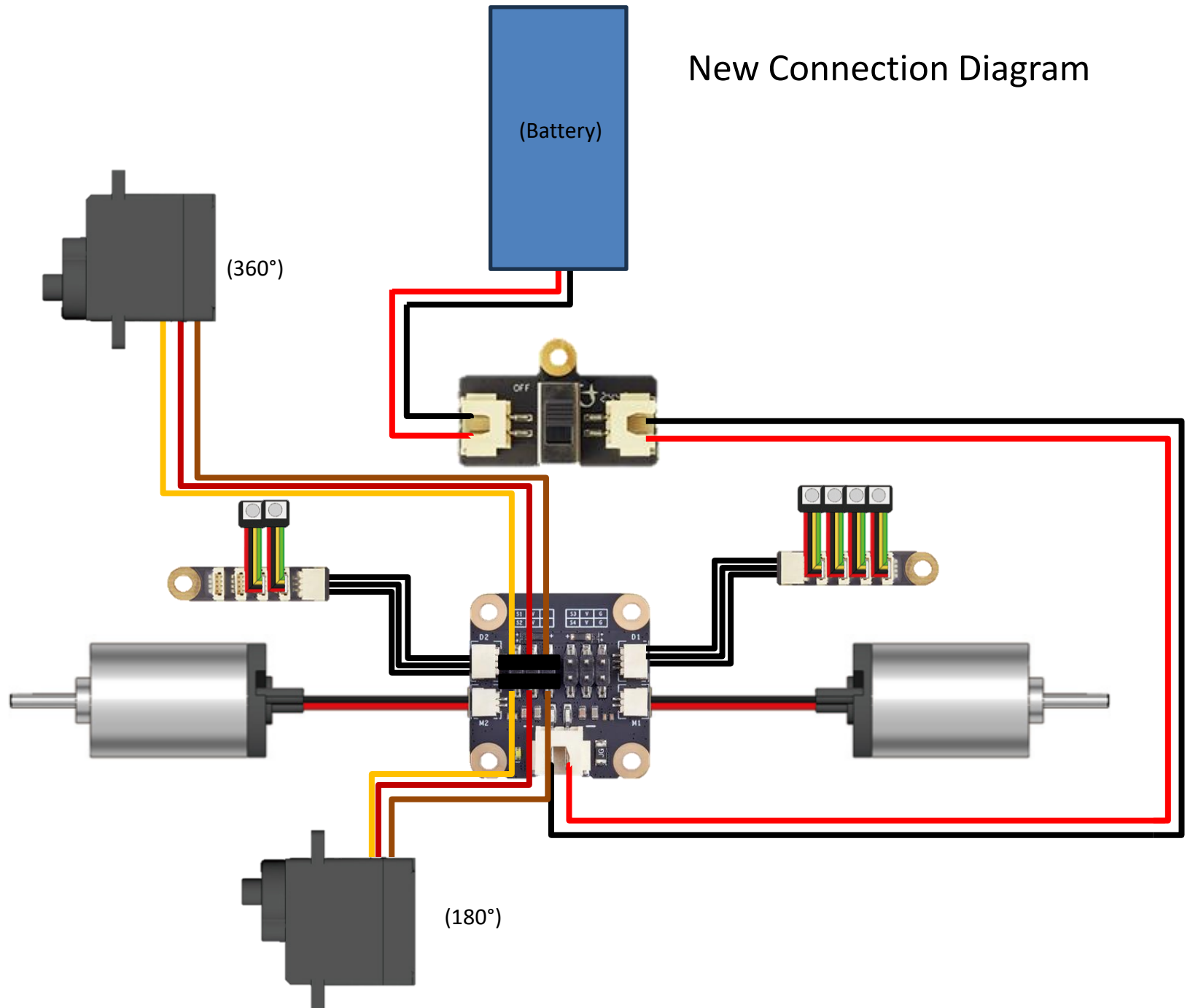
Port 1 servo wires  
(blade servo)

(!!)



4

## New Connection Diagram

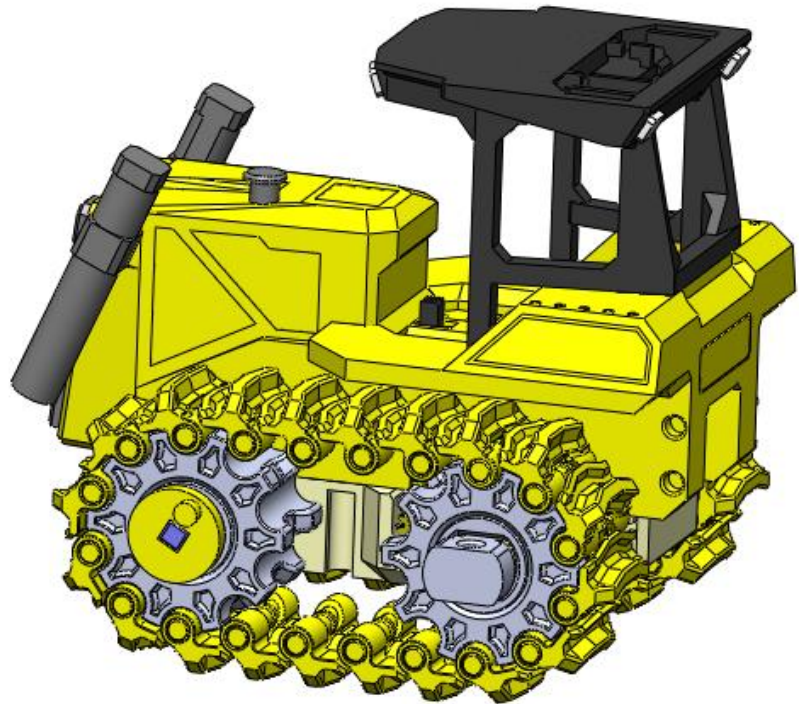




# 5

## Partially reassemble

- Place the body back onto the chassis
  - (make sure the added servo works correctly as in steps 6-10 before attaching with screws)
- Re-connect the battery cable into the control board
- Feed the LED hub extension wire back through the hole into the top of the cab

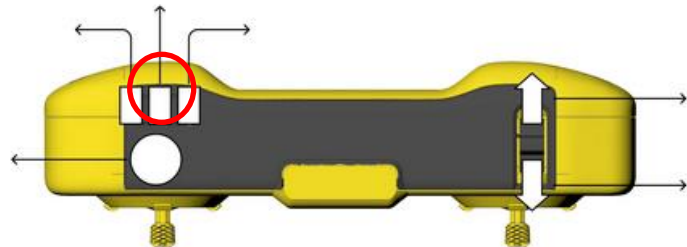




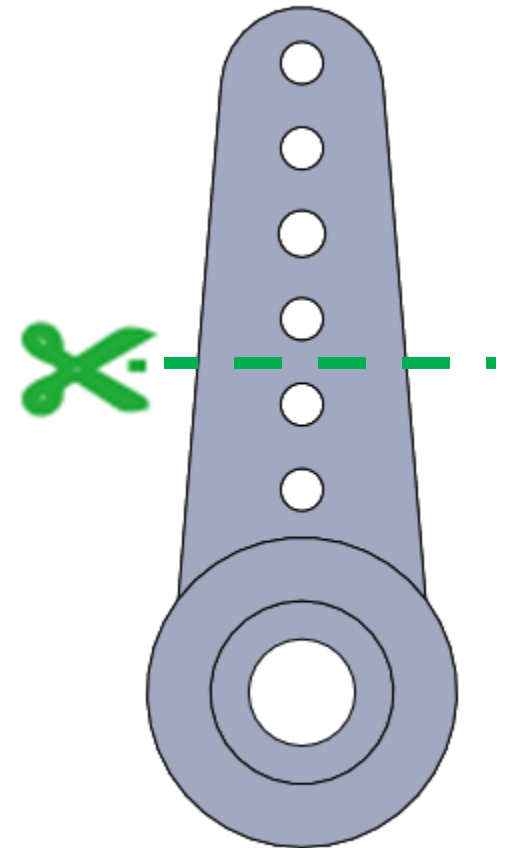
6

With vehicle and remote powered on, Cycle switch to index Servo.

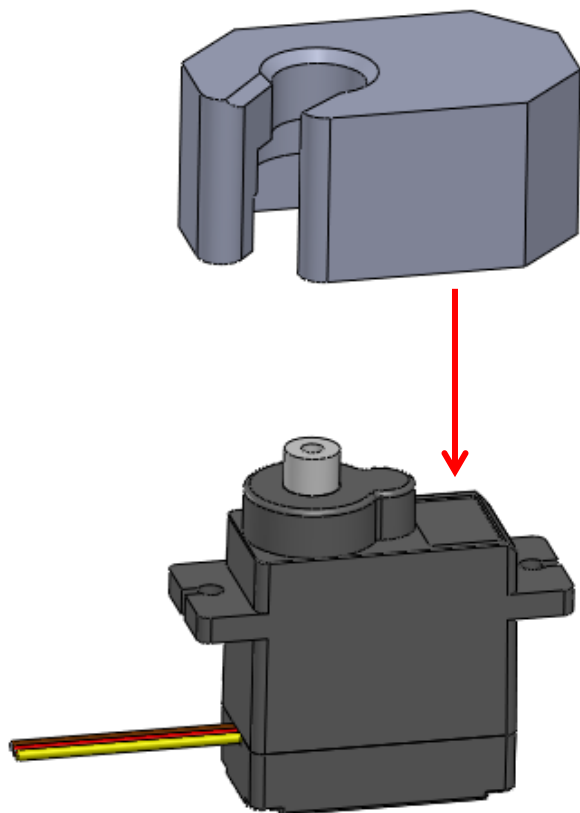
Let switch Remain in middle Position



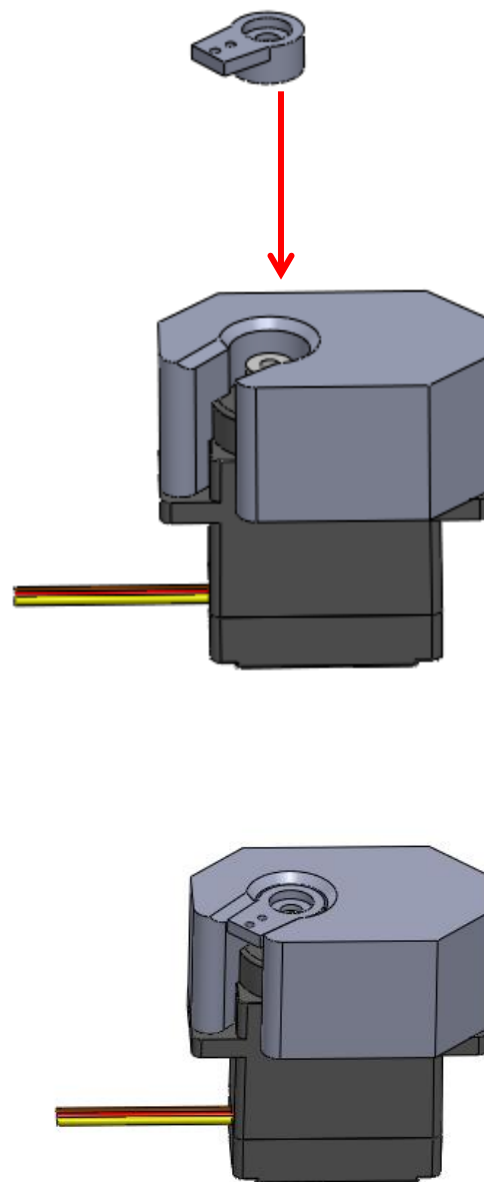
7



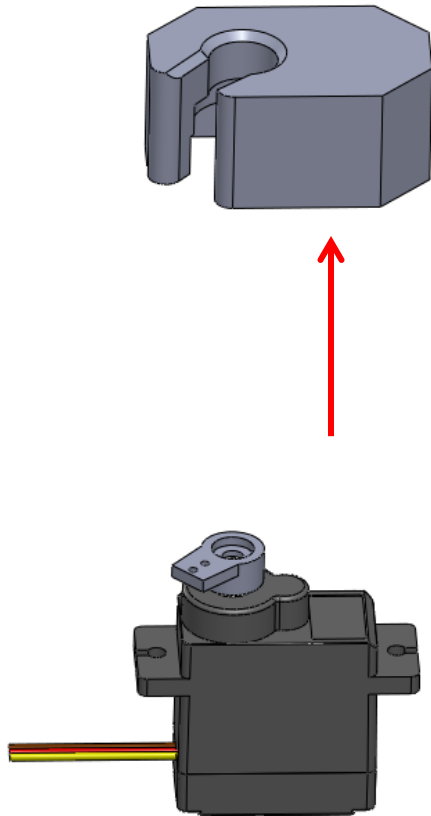
8



9

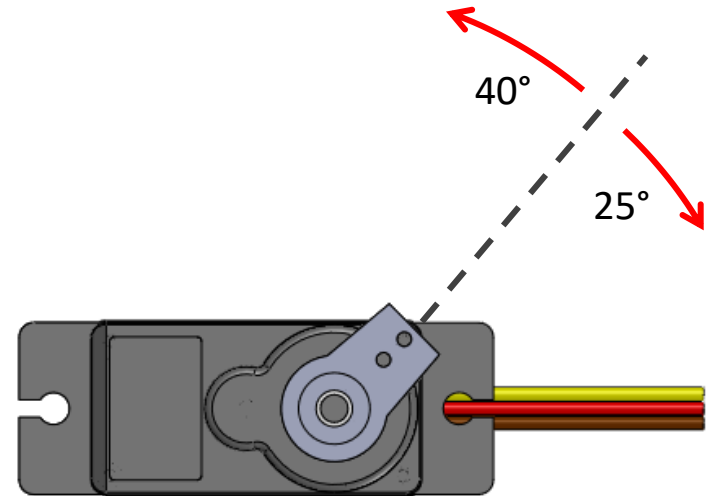


10

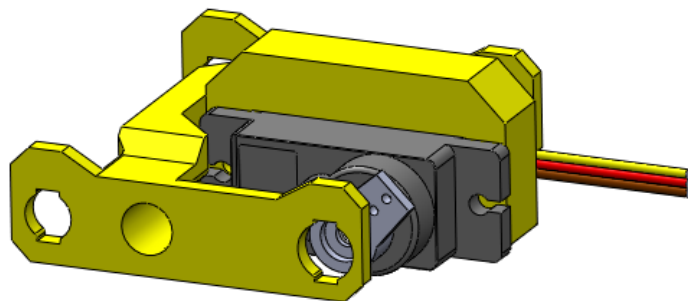
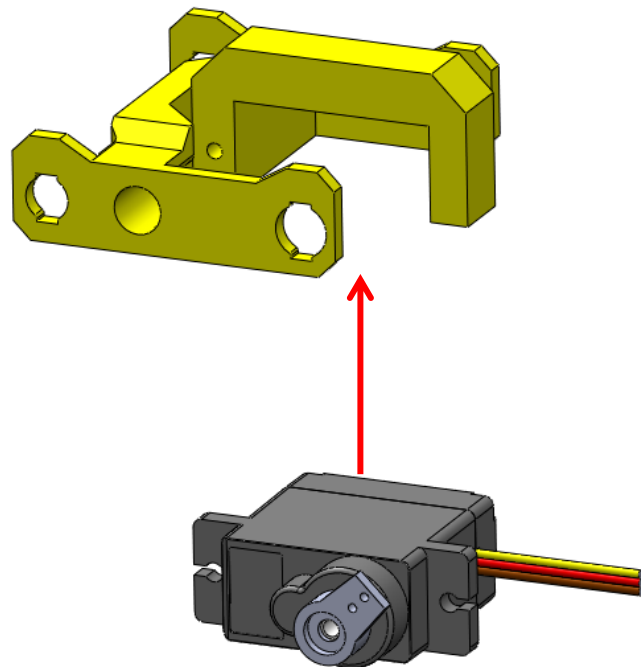


11

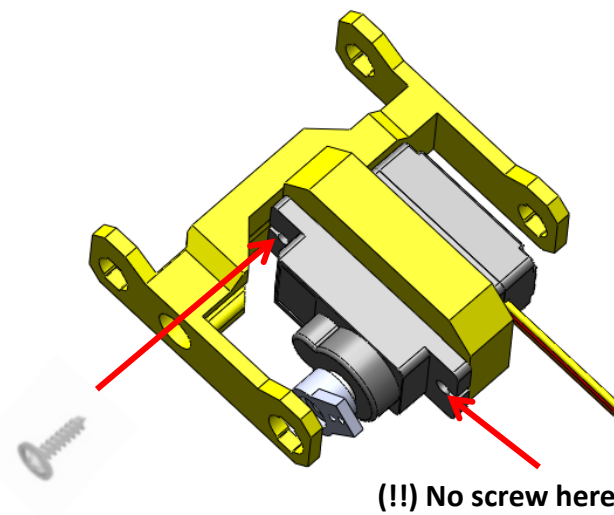
Check motion with controller switch



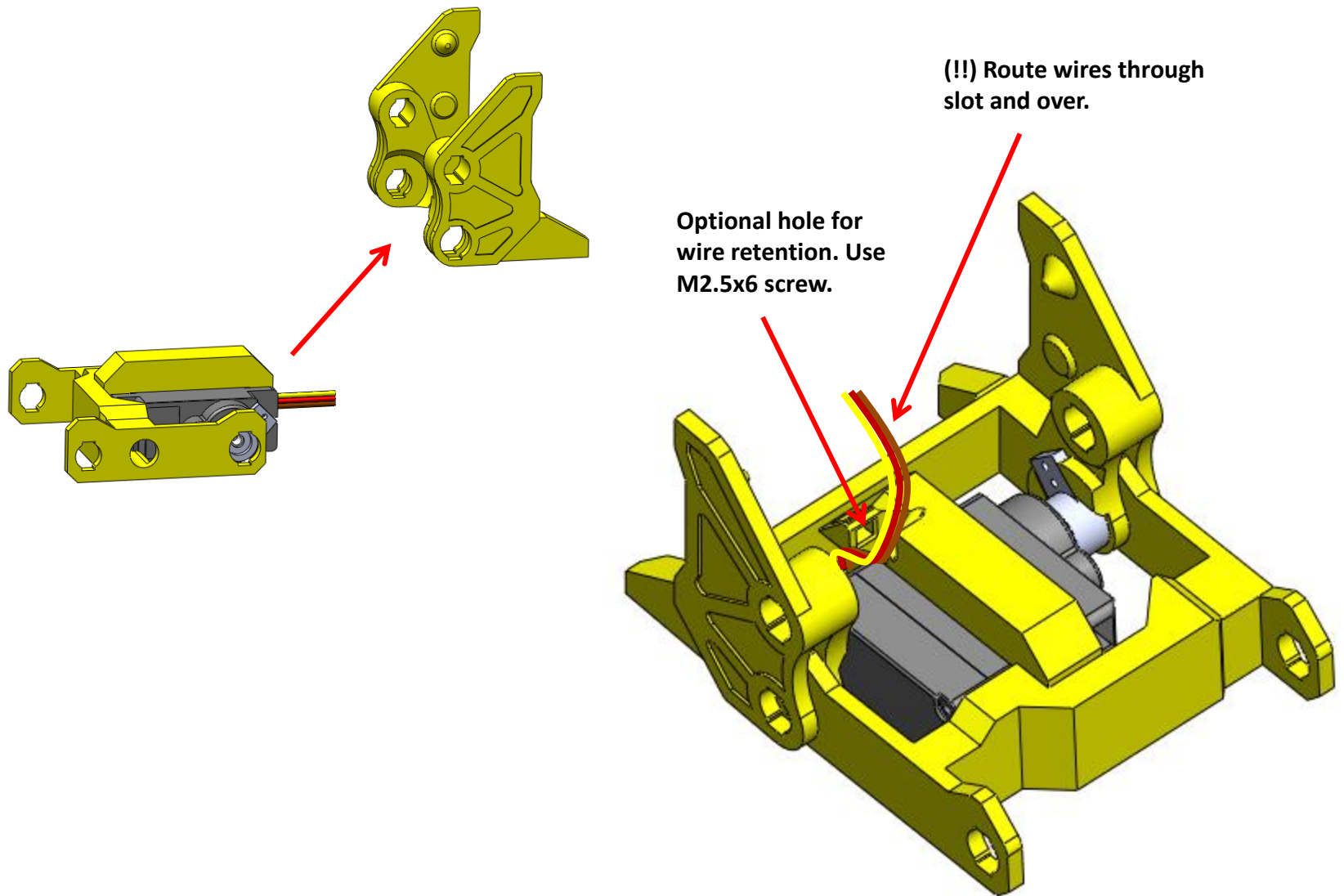
12



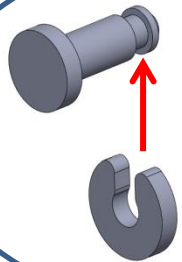
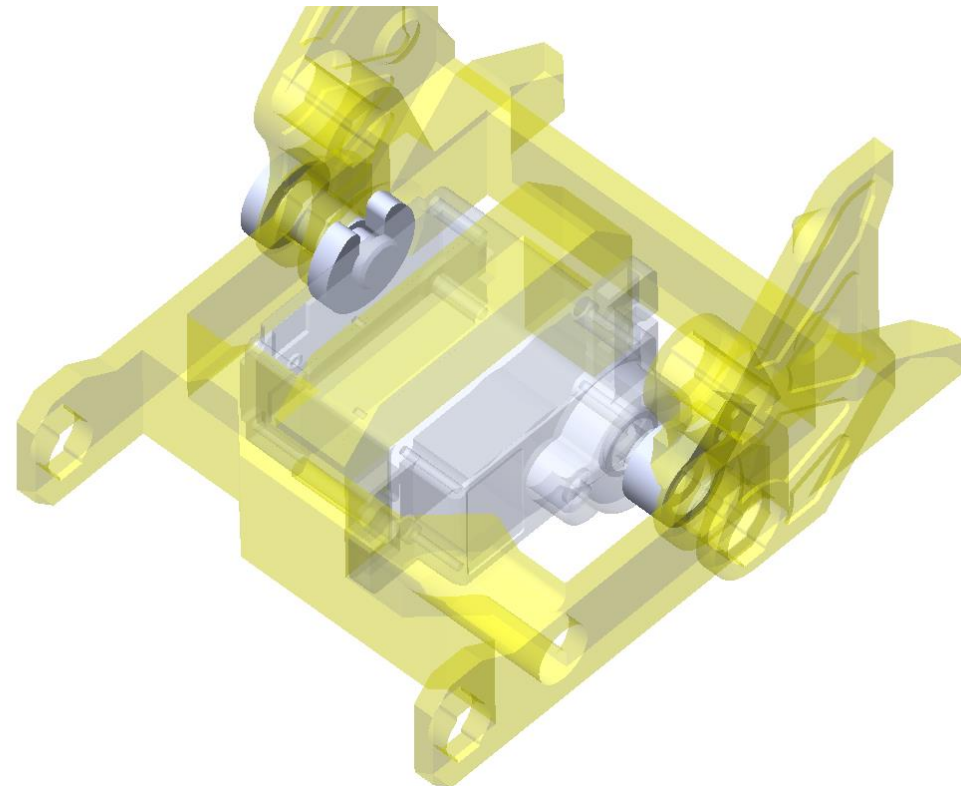
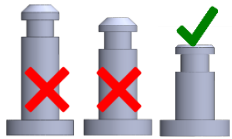
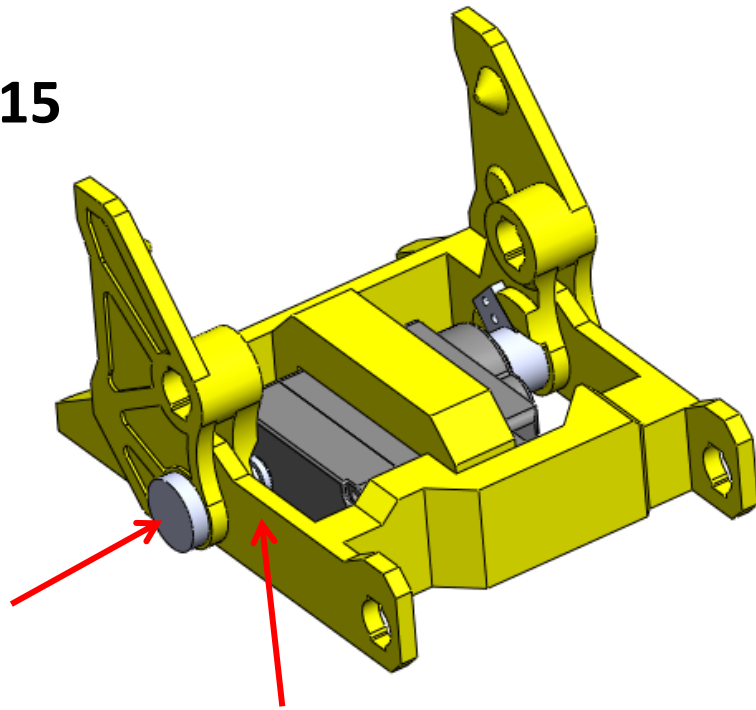
13



14

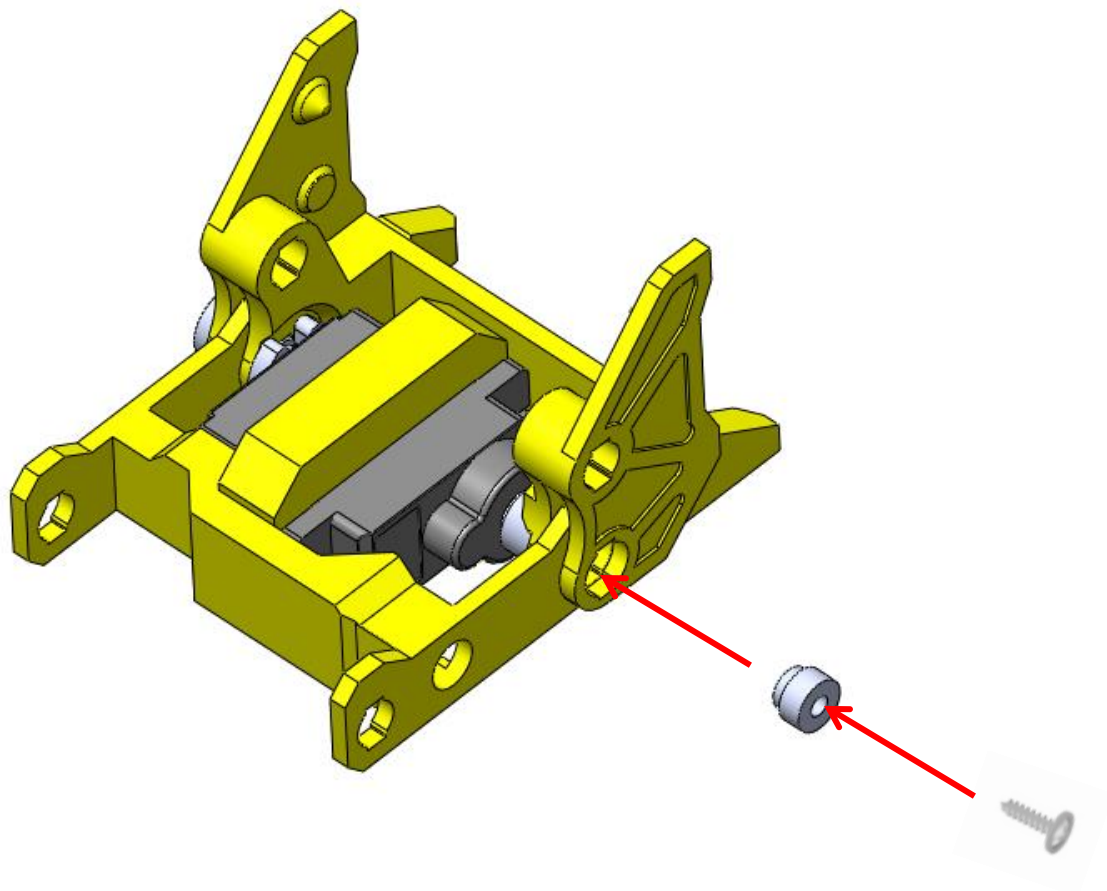


15



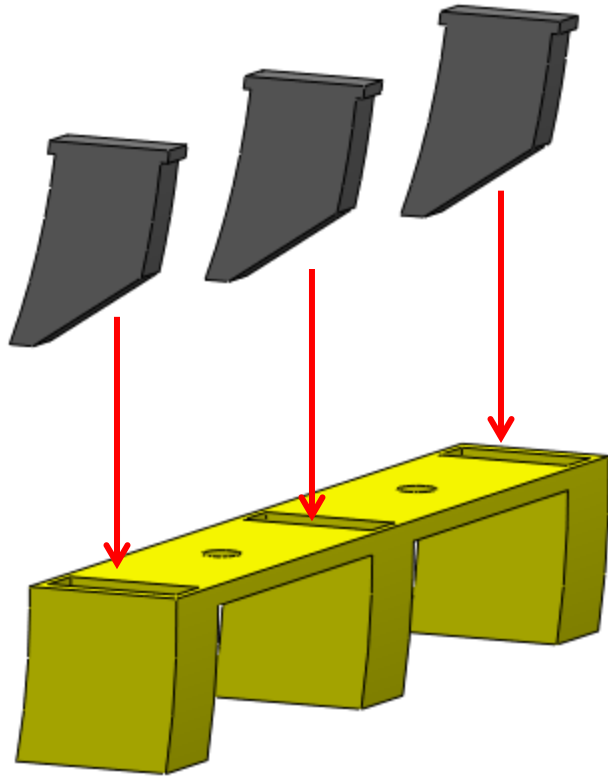
Typical Clip  
Installation

16

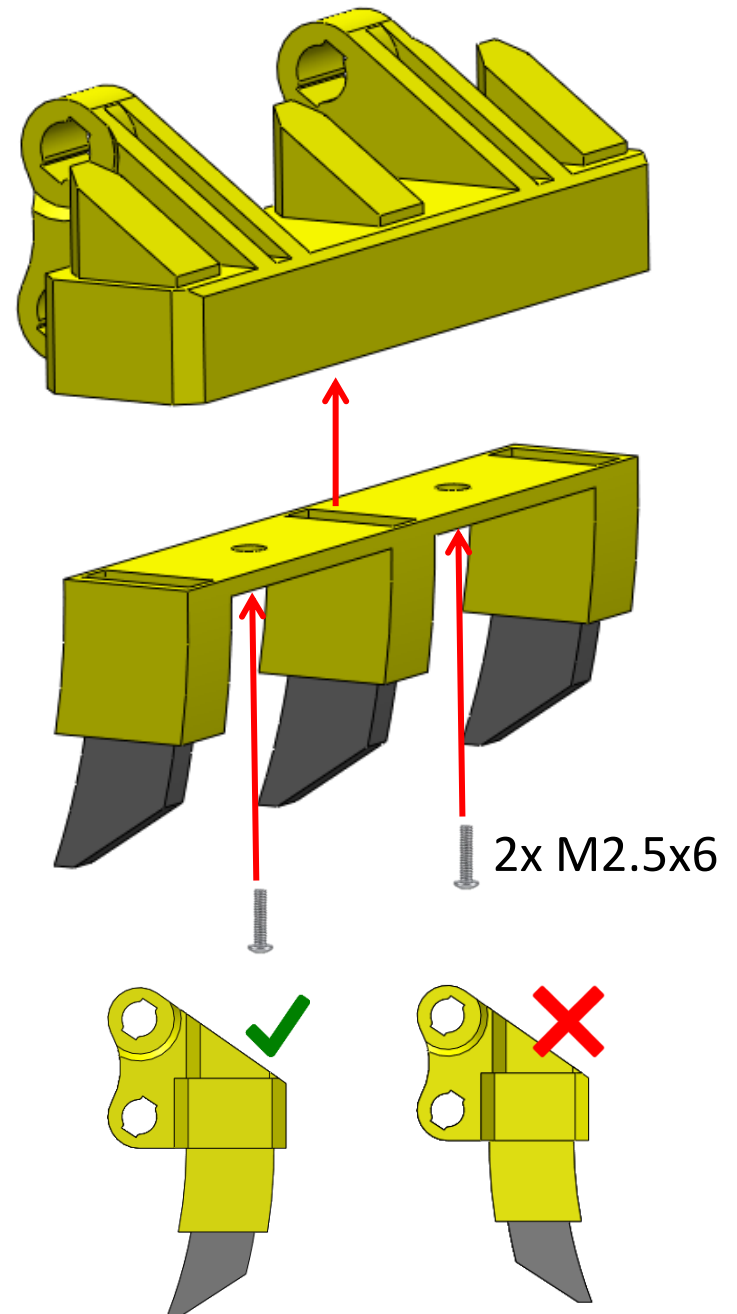




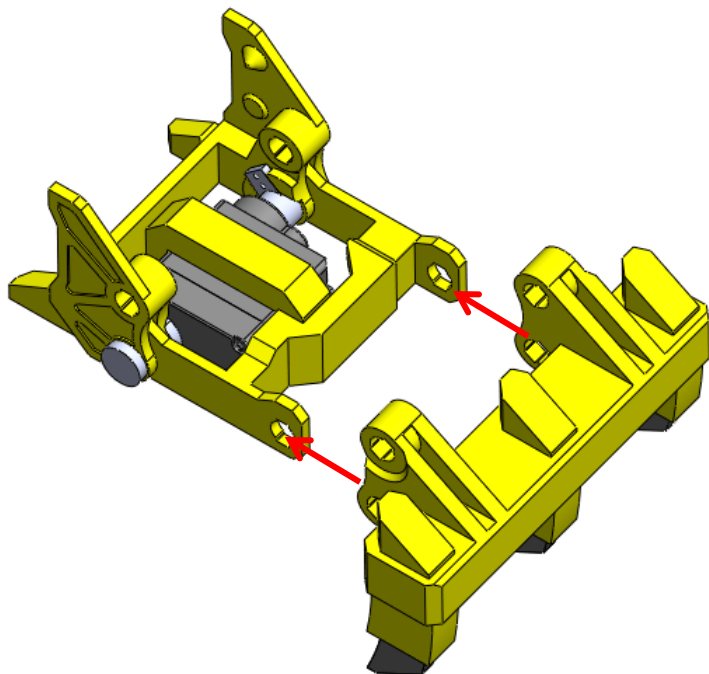
17



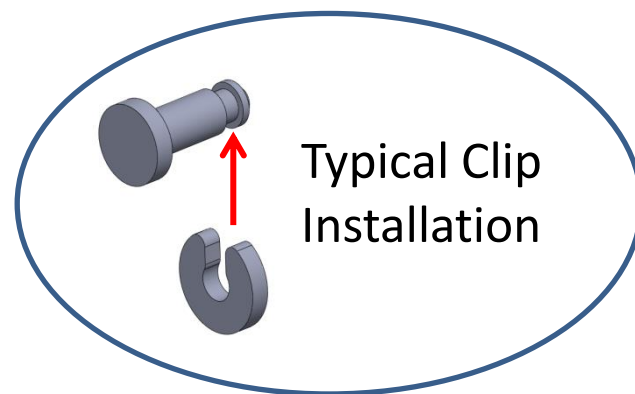
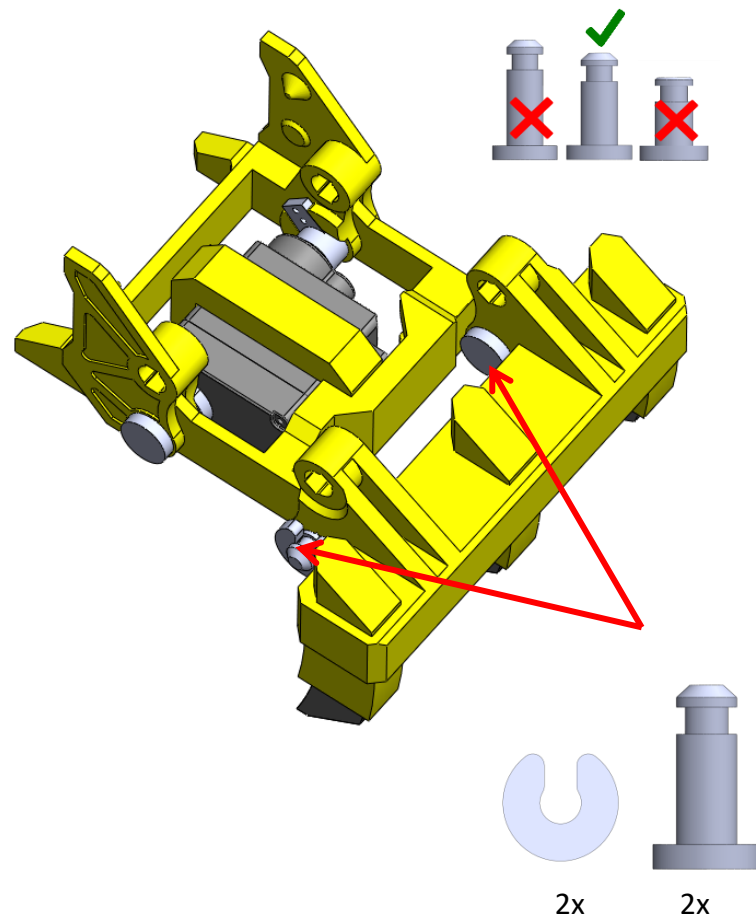
18



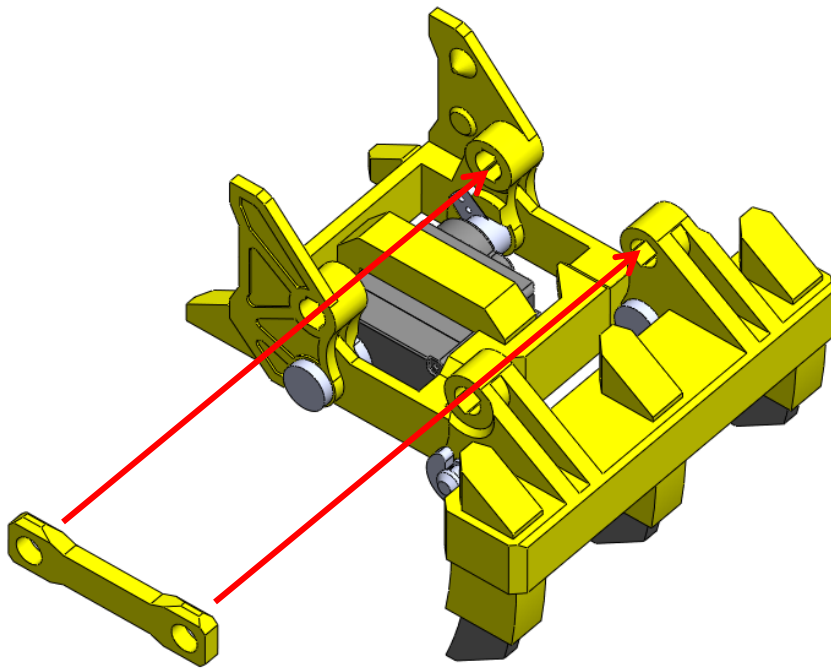
19



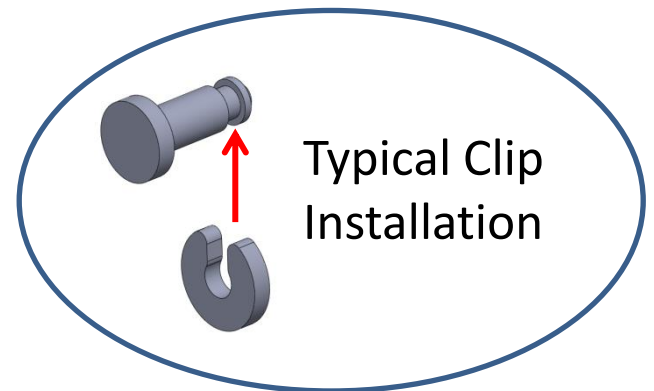
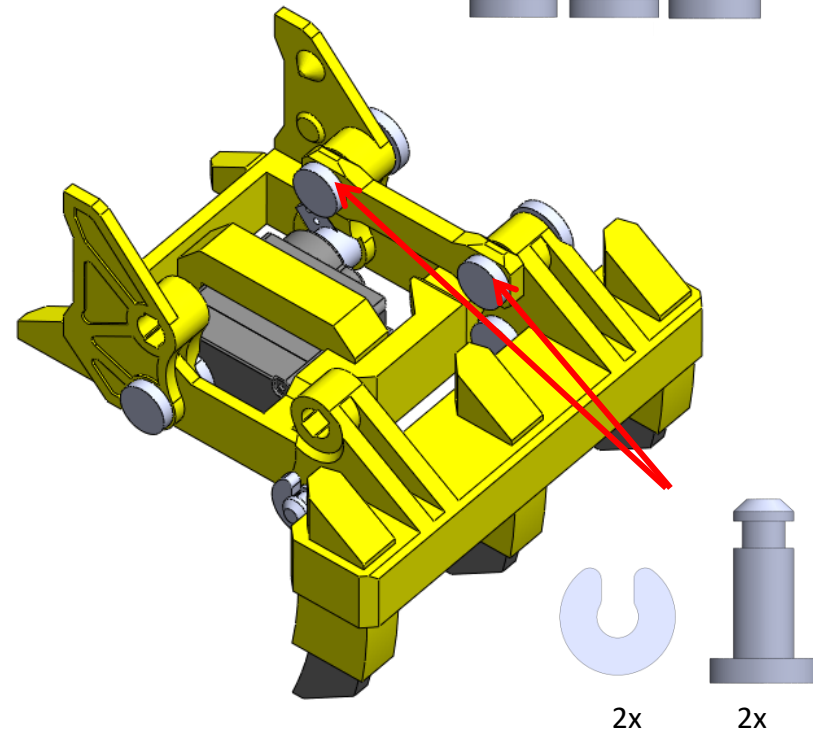
20



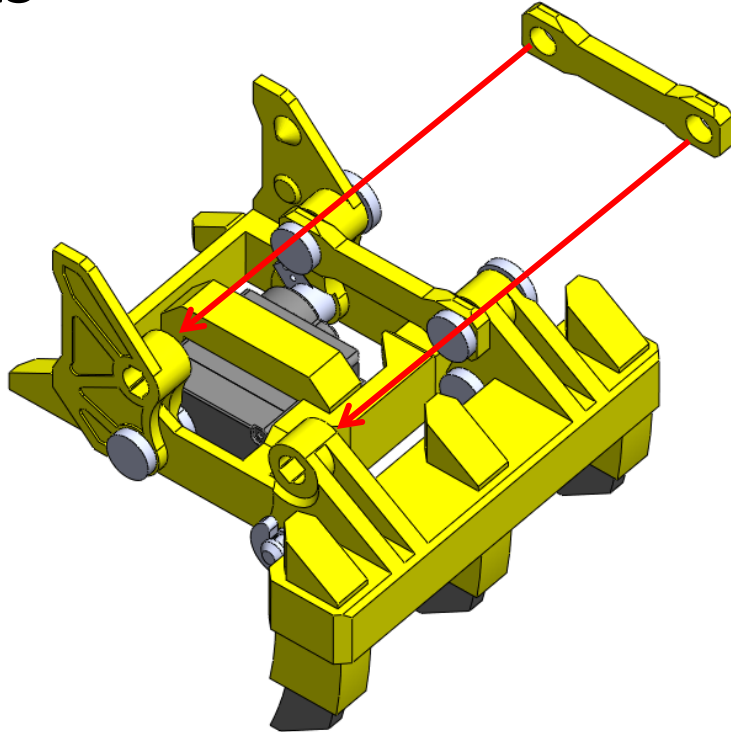
21



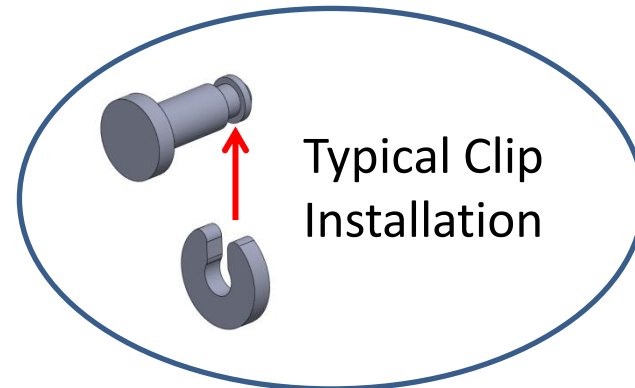
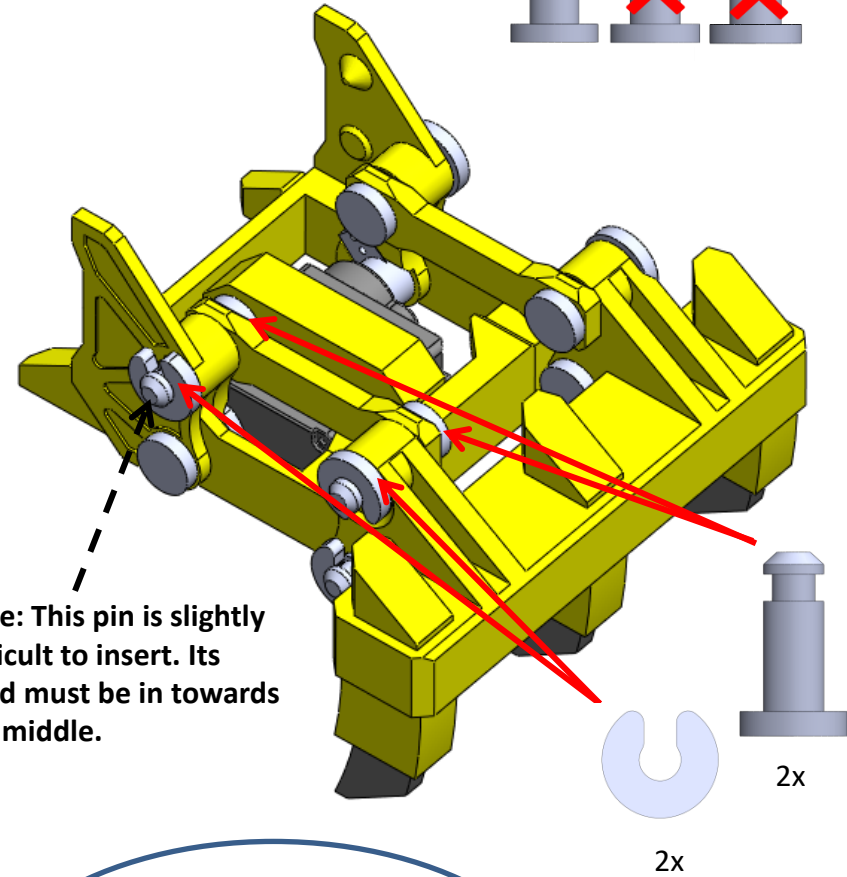
22



23

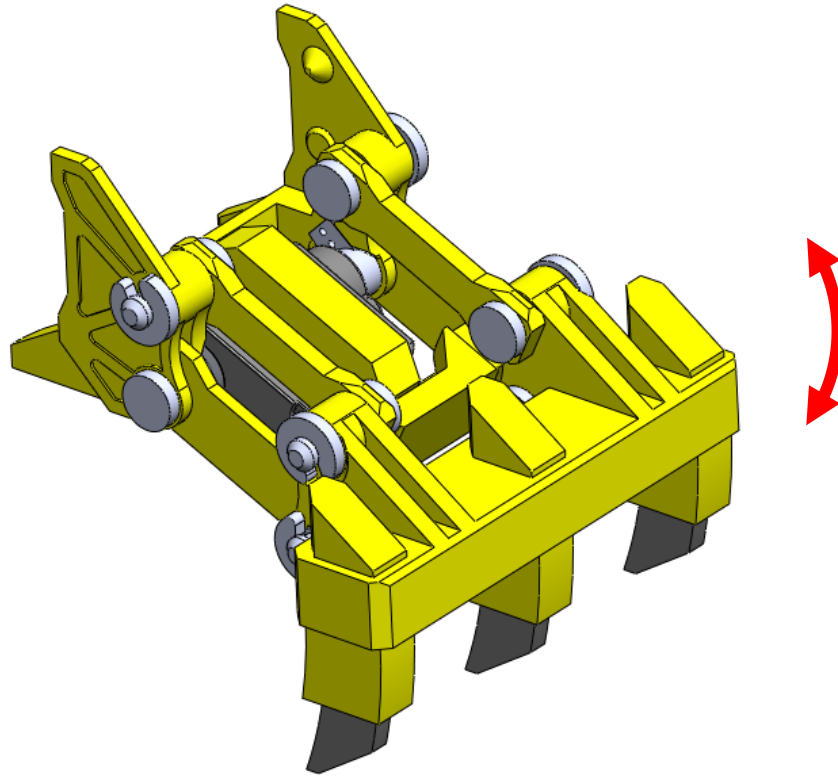


24



25

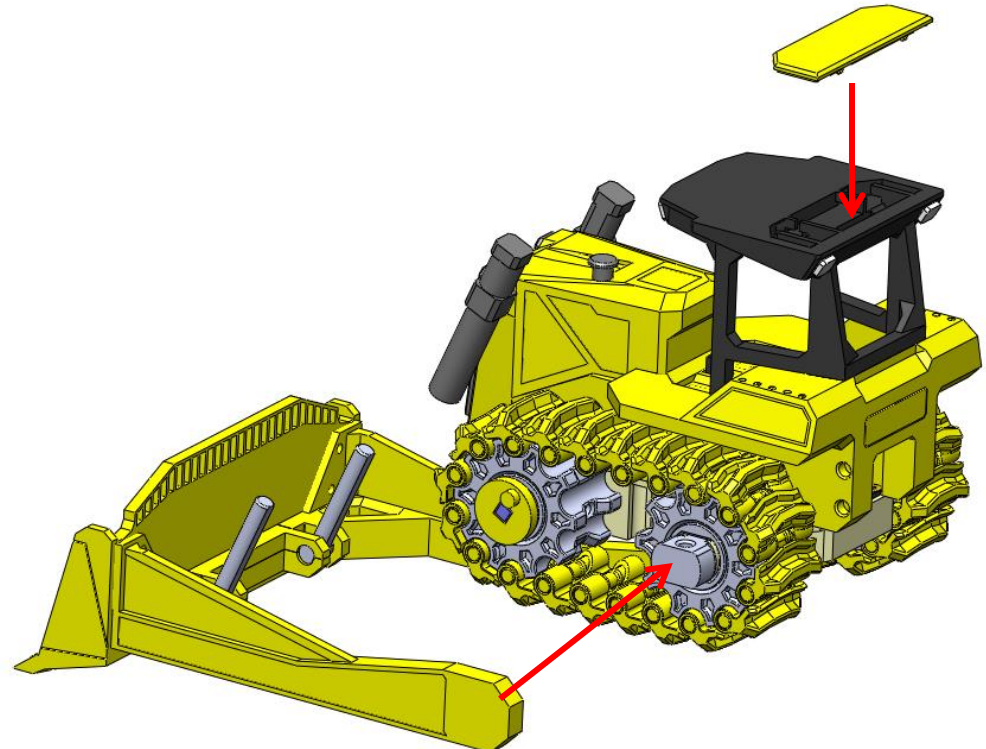
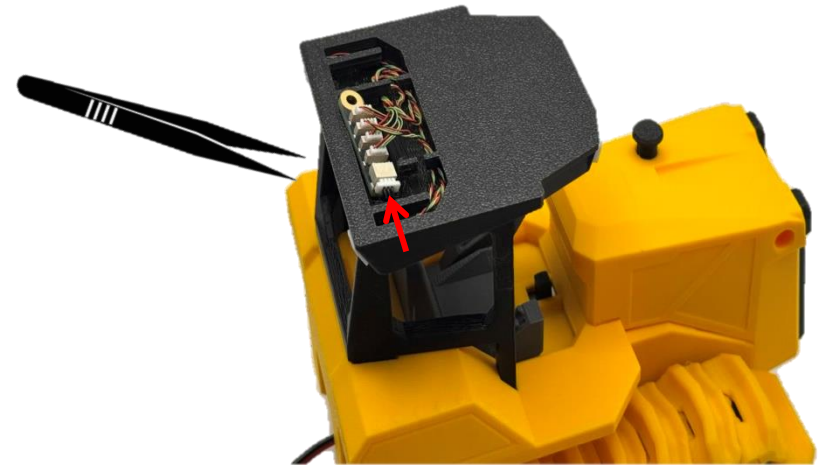
Using controller, check that motion  
of assembly works

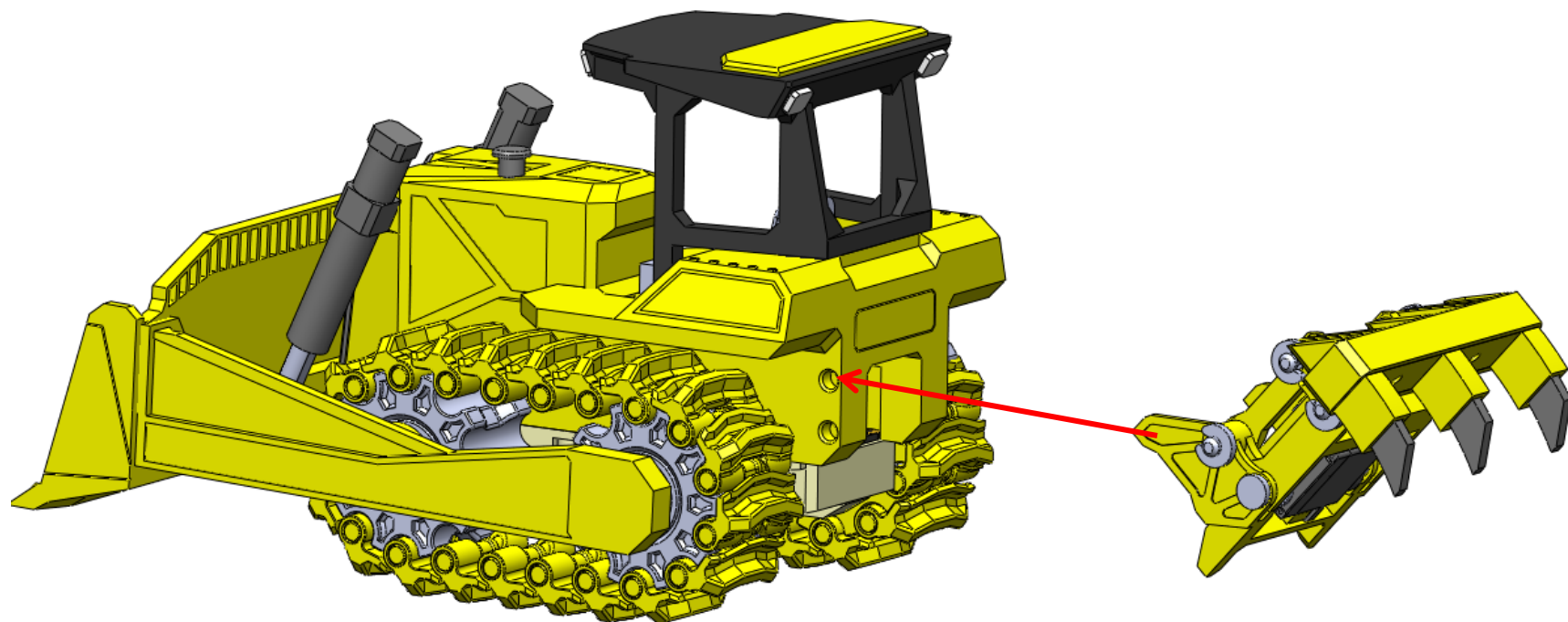


# 26

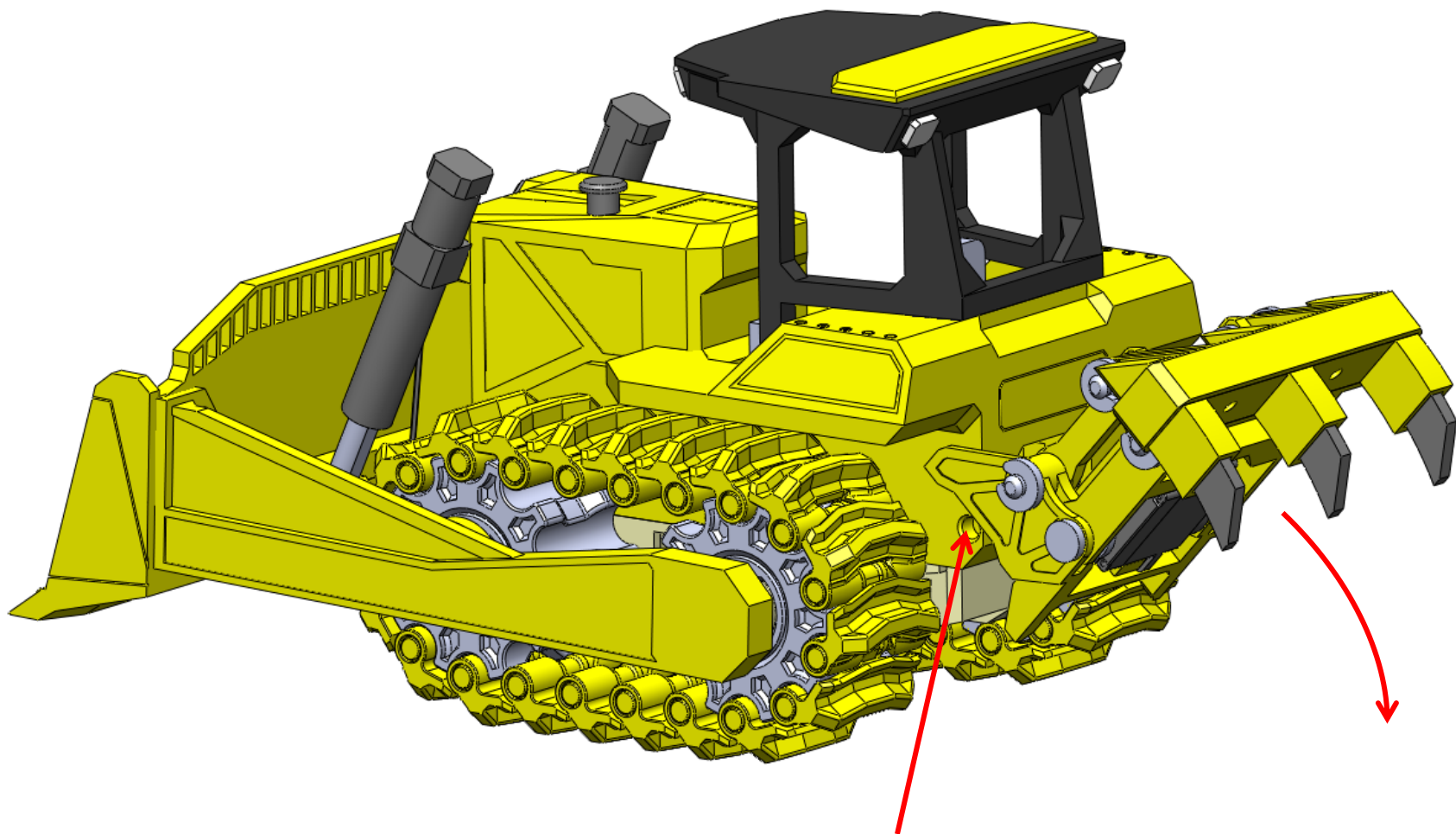
Complete remaining bulldozer assembly

- Reattach top LED hub Extension wire (if present) and Cab cover
- Connect body to chassis with screws
- Reattach Blade

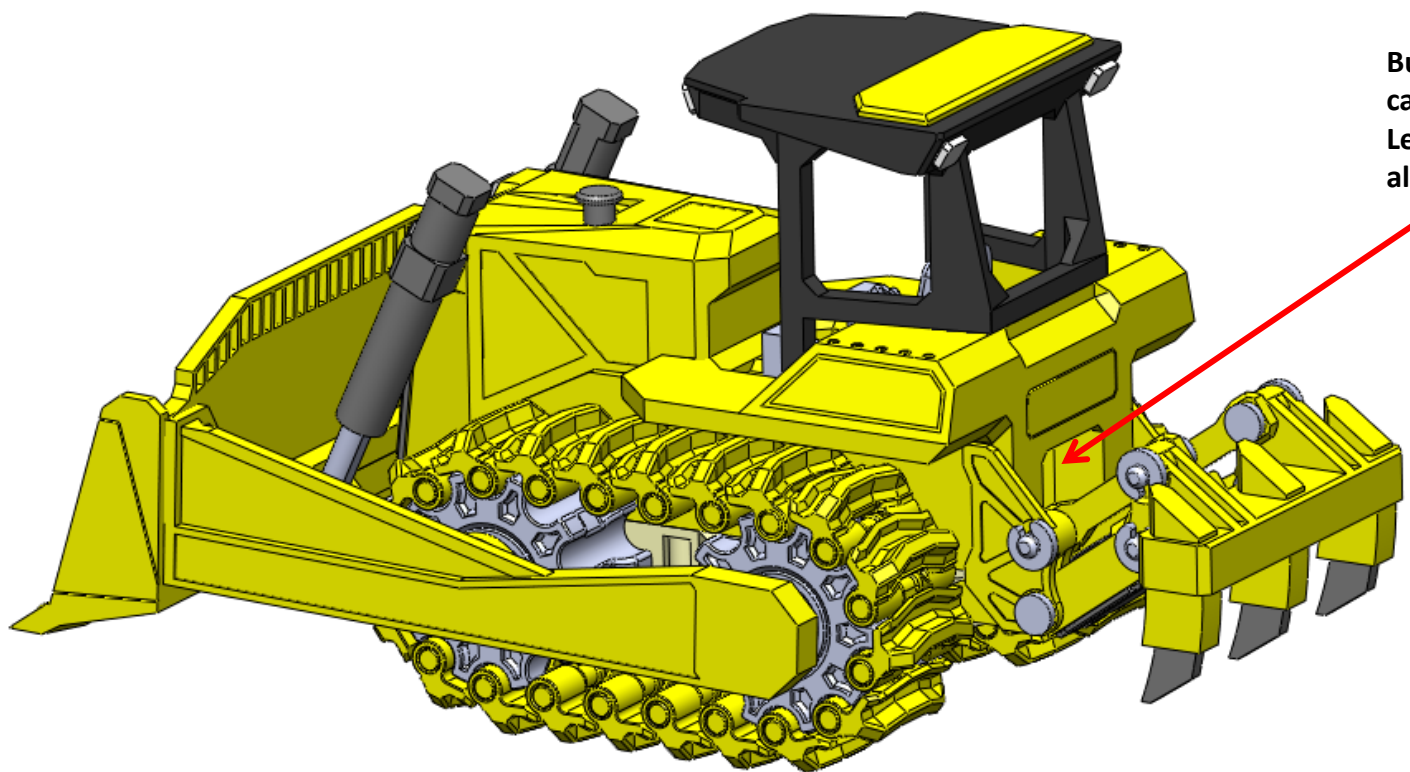






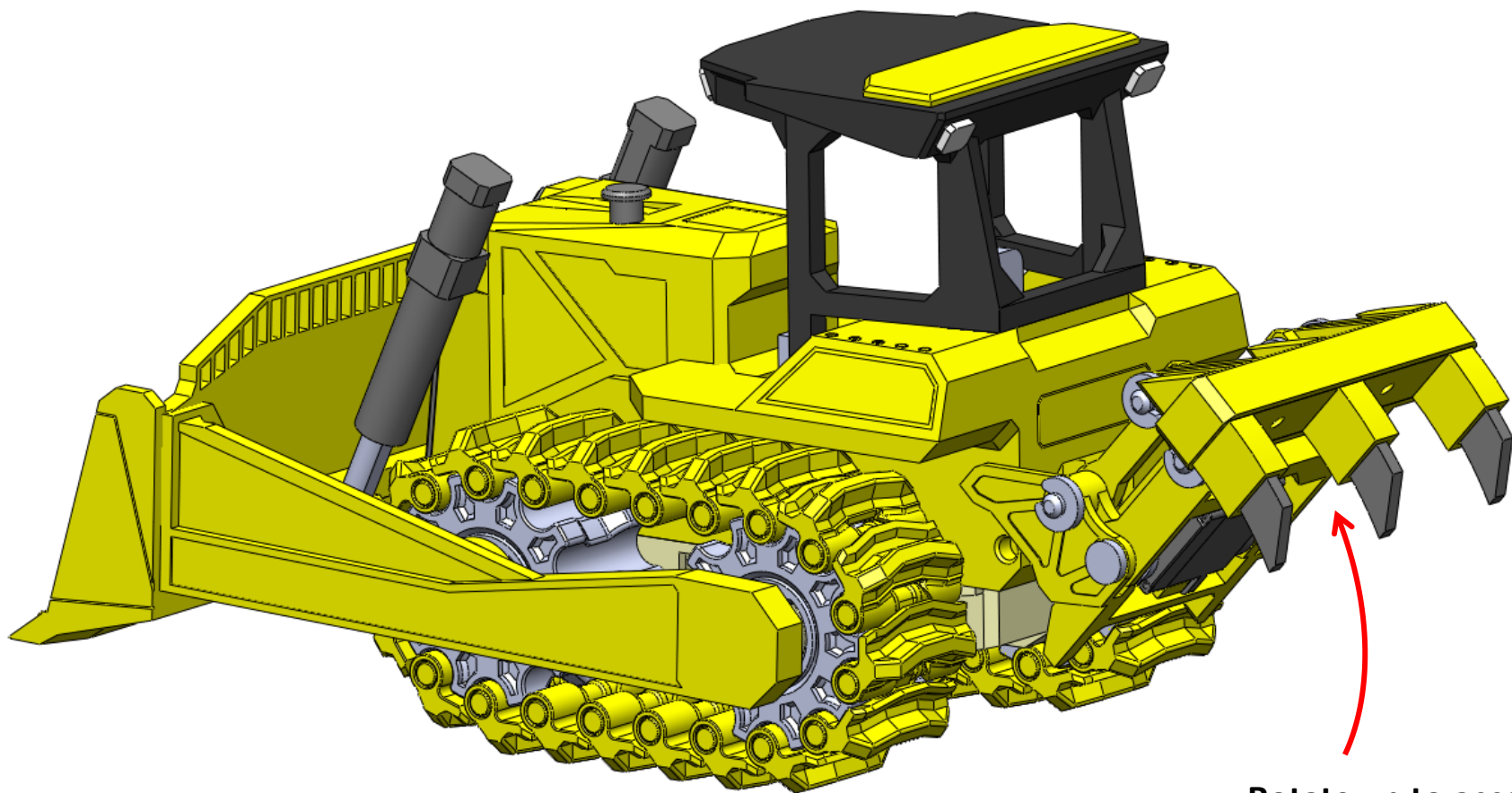


Rotate down to  
click these pins  
into place



**Bundle servo cables and carefully stuff into hole. Leave some wire slack to allow for motion.**

# Charging



**Rotate up to access  
cable to charge**

# Controls

(Cycle Light Modes)

